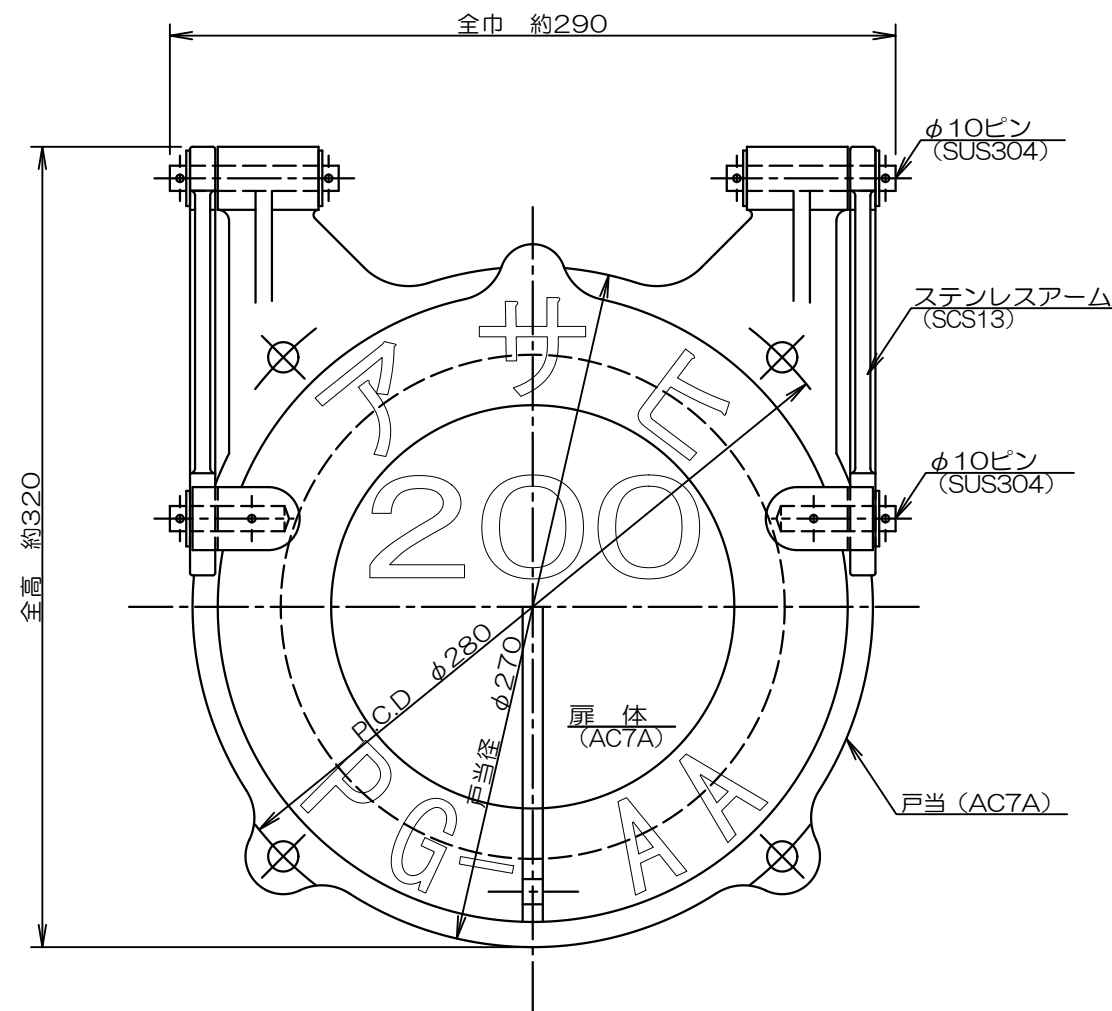
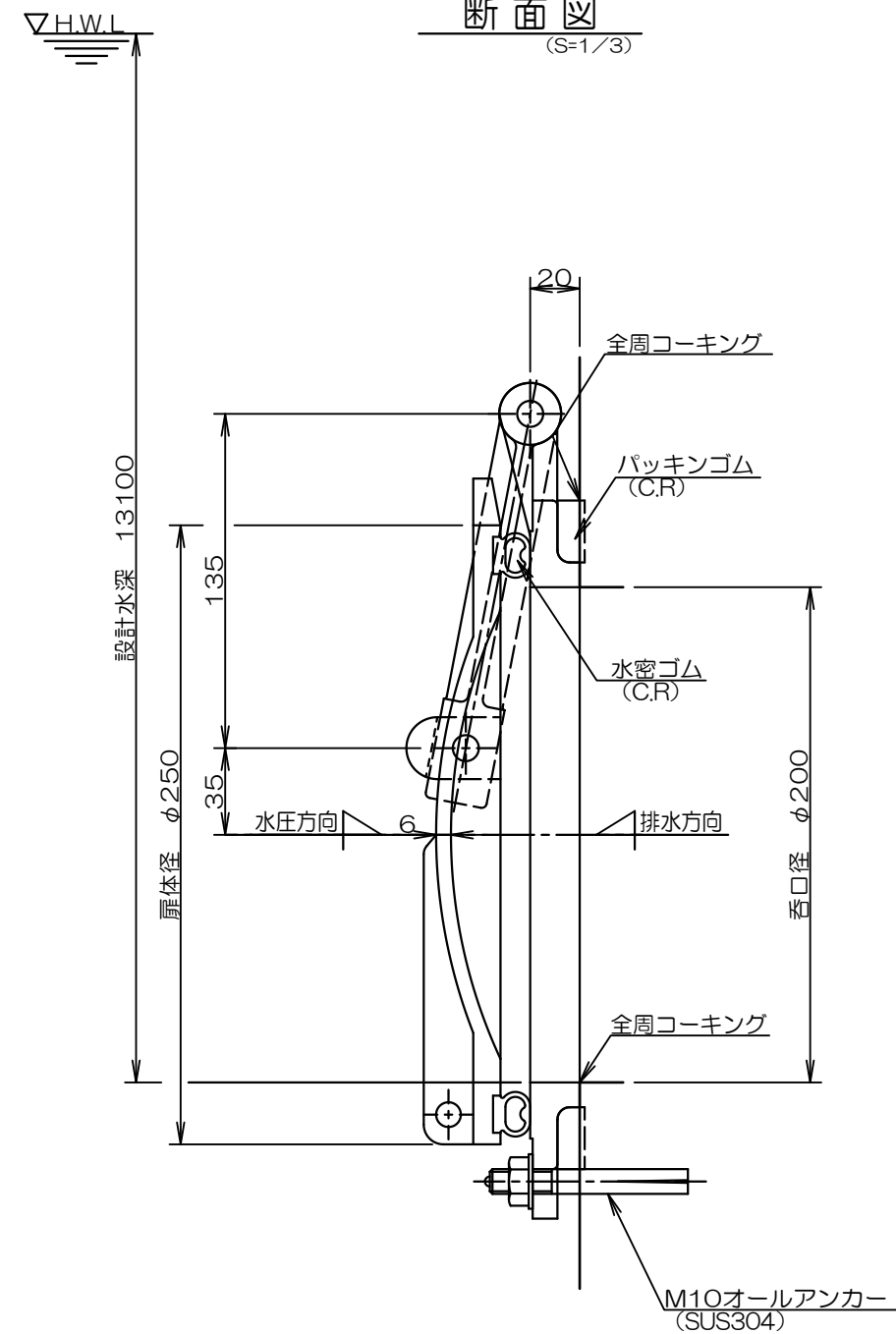


A technical line drawing of a pressure gauge. The gauge has a circular face with a scale from 0 to 200. The needle is positioned at 0. The text '200' is printed on the scale. The text 'PG-AA' is printed on the left side of the gauge face. The gauge is mounted on a flange with four bolts. The drawing is labeled '200' and 'PG-AA'.

(S=1/3)



(S=1/3)



アサヒ工業株式会社